

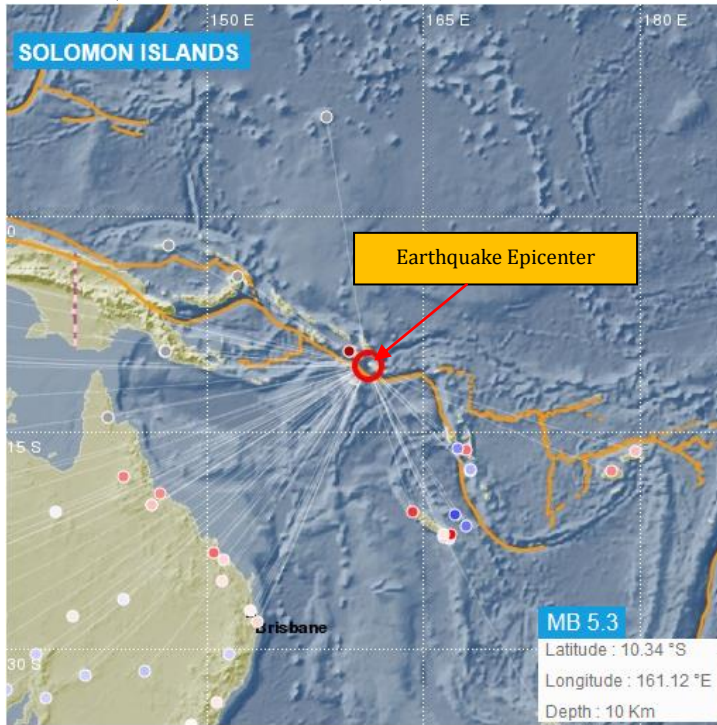


MINERAL RESOURCES DEPARTMENT
SEISMOLOGY UNIT



EARTHQUAKE INFORMATION RELEASE NO.795/16

An earthquake occurred this morning at 09:50:23 AM, local time, 27 km W from Oneibia, San Cristobal, Solomon Islands. (Source: MRD/ORSNET)



i) Tabulated Results

Description	Localisation
✧ Date: 09/12/2016	✧ Solomon Islands Region
✧ Time: 09:50:23 AM	✧ Latitude 10.34°S
✧ Magnitude: 5.3 mb	✧ Longitude: 161.12 °E
✧ Depth: 10 km	✧ Offshore Earthquake
References	
➤ 27 km W from Oneibia, San Cristobal, Solomon Islands.	
➤ 162 km SE from Honiara, Solomon Island	
➤ 1,127 km NNW from Port Vila, Vanuatu.	
➤ 2,058 km NW from Suva, Fiji.	

Evaluation

A **moderate** size earthquake with **shallow depth** source location occurred in the Solomon Islands region. This is an aftershock event from the 8.3 magnitude earthquake that struck the Solomon Islands early this morning. However, it does not pose any significant Tsunami threat to the Fiji region.

This serves as notification only and will keep monitoring for any further updates.

For further information's and queries you are advised to contact the Seismology Unit of the Mineral Resources Department on landline 3381611, mobile 9906165 or fax 3370039/3383910.

J. Dawai

For a/Director Mineral Development
Seismology Unit,
Mineral Resources Department
09/12/2016

